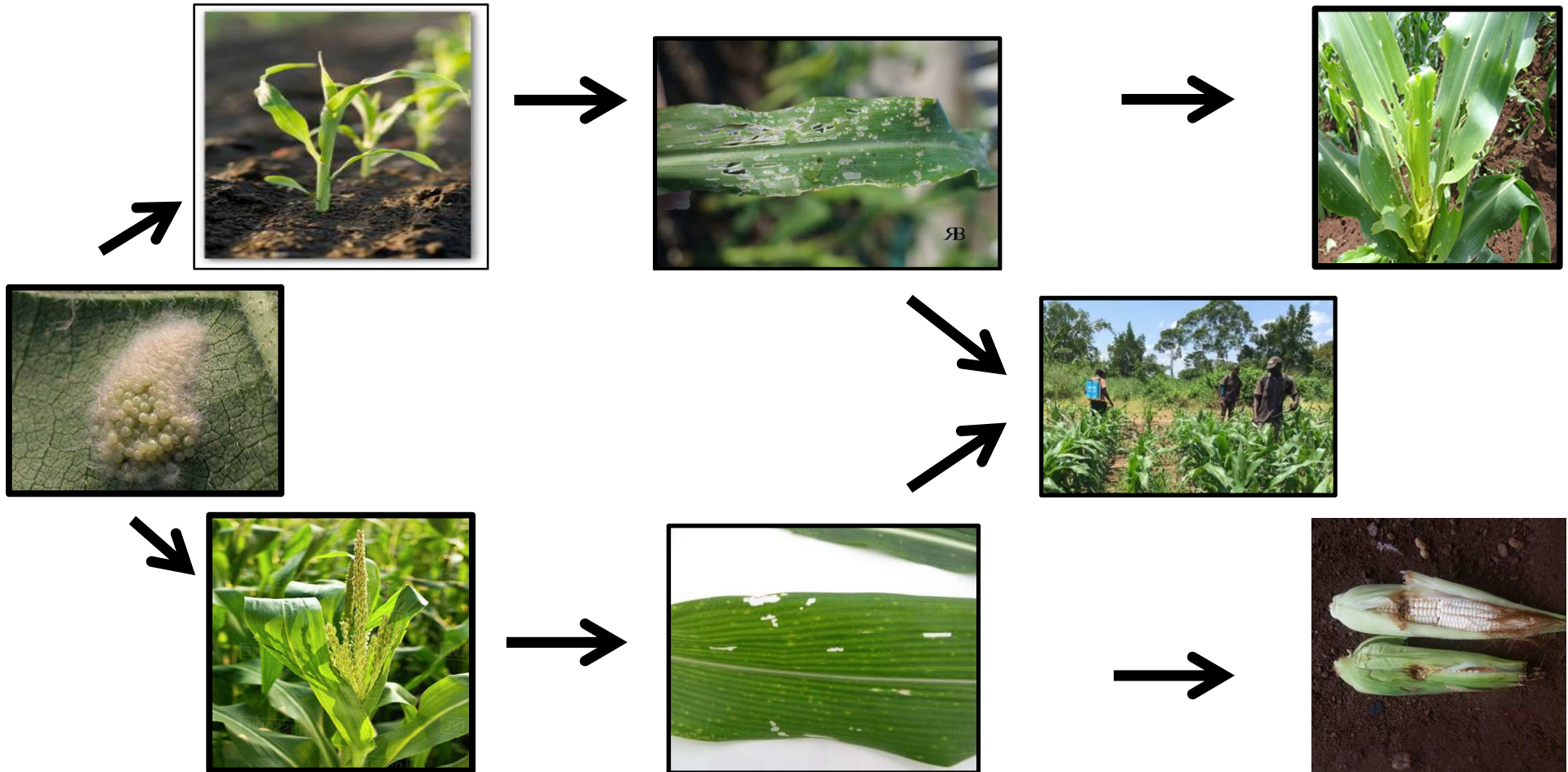


Fall Armyworm Field Scouting Instructions ~ Small-Holder Farms



- 1) In a warm climate, the fall armyworm completes its life cycle in 30-40 days.
- 2) The first generation of worms attacks the foliage. Check your field at the early whorl stage (VE-V6).
- 3) The second generation of worms attacks the ears/cobs. Check your field at first tassel.
- 4) Search for egg-clusters. Crush them.
- 5) Search for worms. Feed them to your chickens.
- 6) Use the most effective, low toxicity insecticides. Protect the natural enemies of armyworms.
- 7) Do not apply highly toxic insecticides after first tassel.
- 8) Harmonize the use of biological, cultural, and chemical control strategies.