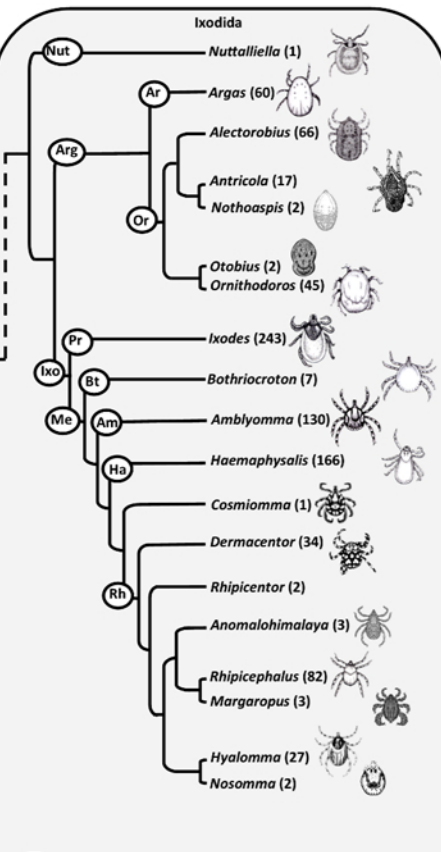
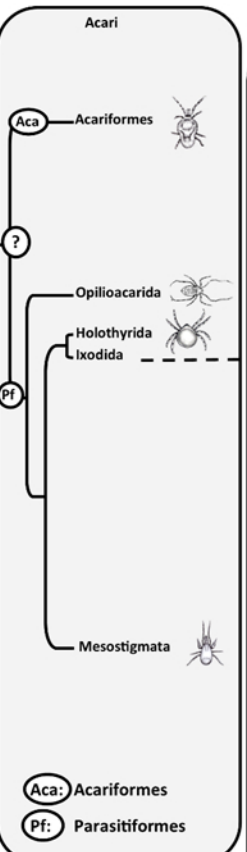
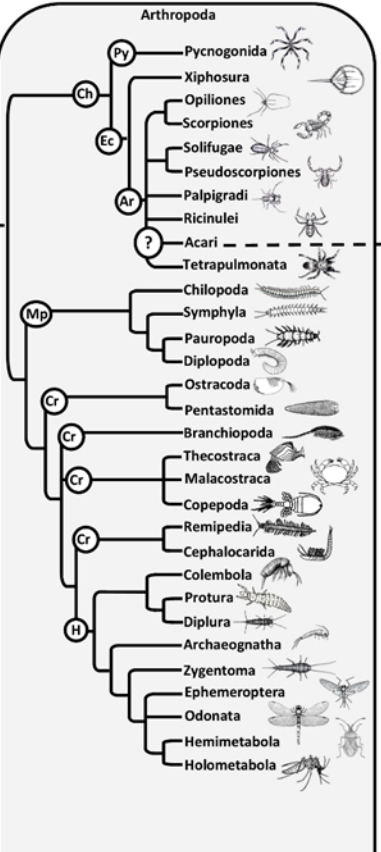
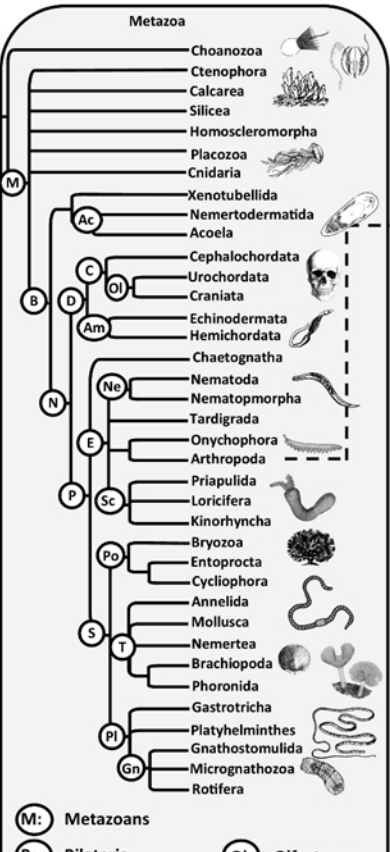
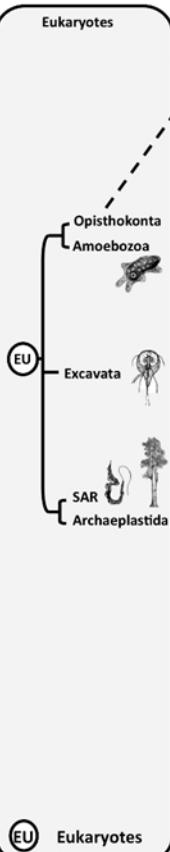


Core of Life

Lineages of Life

Edges of Life



- (EU) Eukaryotes

- (M): Metazoans
- (B): Bilateria
- (AC): Acoelomorpha
- (N): Nephrozoa
- (D): Deuterostoma
- (P): Protostomia
- (C): Chordata
- (Am): Ambulacraria
- (E): Ecdysozoa
- (Ol): Olfactores
- (S): Spiralia
- (Ne): Nematozoa
- (Sc): Scalidophora
- (Po): Polyzoa
- (Pl): Platyzoa
- (T): Trochozoa
- (Gn): Gnathifera

- (Ch): Chelicerata
- (Mp): Myriapoda
- (Cr): Crustacea
- (H): Hexapoda
- (Py): Pycnogonida
- (Ec): Euchelicerata
- (Ar): Arachnida

- (Aca): Acariformes
- (Pf): Parasitiformes

- (Nut): Nuttalliellidae
- (Arg): Argasidae
- (Or): Ornithodorinae
- (Ix): Ixodidae
- (Pr): Prostriata
- (Me): Metastricata
- (Bt): Bothriocrotoninae
- (Am): Amblyominae
- (Ha): Haemaphysalinae
- (Rh): Rhipicephalinae